

Aboveground tanks

single & double-skinned

Technical data

- Design standards: EN 12285-2
- Steel grade - S235JR
- Single or multi-chamber tanks
- Working pressure: max 0,5 bar
- Working temperature: from -20°C to + 50°C
- Outer skin: grit-blasted to grade Sa 2,5 according to ISO 8501-1 and with corrosion protection in class C3 as standard, optional in class C4 or C5
- Optional internal anti-corrosion protection

Application

Storage of flammable and non-flammable liquids harmful to the environment with a density up to 1,1 kg/dm³ for EN 12285 & SANS 10131.

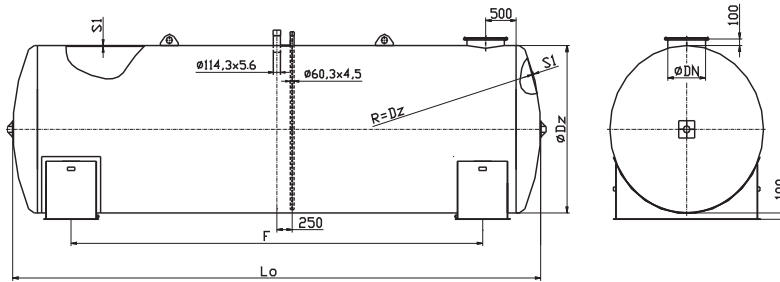
Standard Equipment

Manhole DN600 with gasket • Steel supports • transport grips • ladder, platform, railing • filling, suction, venting

Optional Equipment

- Overfill valve, venting valve, de-watering pipe
- System to monitor tightness of interstitial spaces
- System to measure the amount of liquids in the tank
- Heating cables
- Insulation





Aboveground tanks according to EN12285-2

Volume [m ³]	Diameter [mm]	Total Length* [mm]	Total Height [mm]	Total weight Single skin [kg]	Total weight Double skin [kg]	Shell thickness		Additional chamber weight [kg]	Distance between cradles [mm]
						S1 [mm]	S2 [mm]		
3	1600	1940	1900	864	1454	6	3	245	700
5		2820		1076	1778				
7		3820		1316	2146				
10		5700		1767	2838				
10	1900	4080	2200	1620	2474	6	3	290	2400
15		5960		2277	3496				
20		7840		2703	4159				
25		9720		3244	5001				
30		11200		3670	5664				
35		13080		4212	6506				
20	2500	4550	2800	2563	3893	6	4	400	2500
23		5330		2857	4352				
25		5730		3008	4587				
30		6710		3377	5163				
35		7910		3829	5869				
40		8690		4123	6327				
45		9790		4538	6974				
46		10170		4681	7198				
50		10870		4945	7609				
55		12070		5397	8315				
60		12850		5691	8774				
30	2900	5205	3200	4227	6447	6	4	550	3000
35		6195		4732	7253				
40		6690		4984	7656				
50		8175		5742	8865				
60		9660		6500	10074				
70		11145		7257	11283				
80		12630		8015	12492				
90		14610		9025	14104				
100		16095		9782	15313				

* Total length within a tolerance of +/-1% to standard

